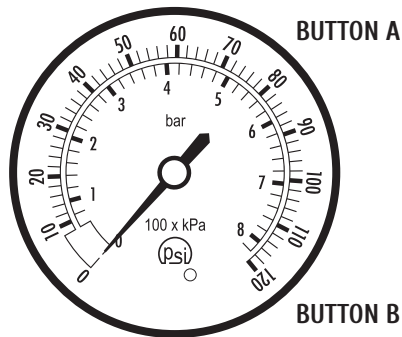


TOKYOFLASH JAPAN®



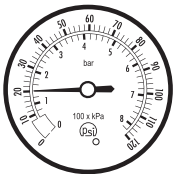
INSTRUCTION MANUAL

## 1. HOW TO READ THE TIME



- The time is indicated by the numbers 0-120 on the outer PSI dial.
- The needle always rests at 0.
- Press button A to show the time.
- The needle will move 3 times to indicate in turn: the hour, 10 minute group, and single minutes.
- The needle will return to 0.

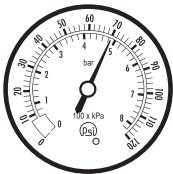
## TIME EXAMPLE



20 = 2 o'clock



40 = 40 minutes



70 = 7 minutes

Time: 2:47

## TIME EXAMPLE



100 = 10 o'clock



20 = 20 minutes



80 = 8 minutes

Time: 10:28

## 2. HOW TO SET THE TIME

- You will set the following in sequence: hour > 10 minute group > single minutes.

### *I. Hour*

- Press button B to enter setting mode. The red LED will flash.
- Press button A to move the needle to the correct hour.
- Press button B to confirm and move to the minutes setting.

### *II. 10 Minute Group*

- Press button A to move the needle to the correct 10 minute group.
- Press button B to confirm and move to single minutes setting.

### *III. Single Minutes*

- Press button A to move the needle to the correct single minute.
- Press button B to confirm and finish setting.

### 3. HOW TO CHARGE THE WATCH

- When the red LED becomes dim or does not light up, if the needle no longer moves, or if you have not used the watch for 2 months, you should recharge the watch.
  - The watch can be recharged by connecting the USB charging cable provided to the watch USB port and to your computer's USB port.
  - To open the watch USB port, use the screw driver included with the watch so as not to damage the screw head.
- It is advised that you only use the USB cable provided to recharge the watch because it is designed for this watch.
  - When charging, the red LED will flash.
  - When the red LED stops flashing, the watch is fully charged.
  - It is advised that you continue to charge the watch for the full 2 hours to ensure the battery is 100% charged.

## 4. CALIBRATING THE NEEDLE

- Sometimes, due to low battery, the needle may not rest at 0 or may not move to the correct position. If this happens you can calibrate the needle position to 0.
- Connect the USB charging cable provided to the watch USB port and to your computer's USB port.
- To open the watch USB port, use the screw driver included with the watch so as not to damage the screw head.
- It is advised that you only use the USB cable provided because it is designed for this watch.
- The red LED will flash.
- Press button B, and with each press, the needle will move one step clockwise or counter clockwise.
- To change the direction the needle moves in, disconnect and reconnect the USB charging cable and press button A.
- When the needle position is at 0 it is correctly calibrated and you can disconnect the USB charging cable.

## 5. INCLUDED IN THE BOX

- *Watch*
- *USB cable*
- *Screw driver*
- *Spare USB screw*
- *Instruction manual*

## 6. USER INFORMATION

### *1. Battery*

- This watch uses a 3.7V PL401119 rechargeable battery.
- The battery should last for 2 months between charges.
- The battery lifetime is expected to be 300 charges.
- Only use the cable provided with the watch for recharging, as it is designed specifically for this watch.

## *II. Warranty*

- This watch is covered by a 1 year warranty. This warranty does not cover water damage, accidental damage, neglect or unauthorized repair.

## *III. Water Resistance*

- This watch has limited water resistance. Please do not use the watch in the shower, for swimming or for other water related activities.

## 7. SPECIFICATIONS

*Case Materials:* Stainless Steel

---

*Strap Materials:* Leather / Nylon

---

*Case Dimensions:* 45 mm x 45 mm x 14 mm

---

*Finish:* Sandblasted Stainless Steel / IP Black

---

*Wrist Size:* Approx. 150 mm - 210 mm (adjustable)

---

*Weight:* 65 grams

---

*Movement:* Patented Motor Movement

---

*Battery:* 3.7V PL401119 rechargeable battery



change the way you think about time

[www.tokyoflash.com](http://www.tokyoflash.com)